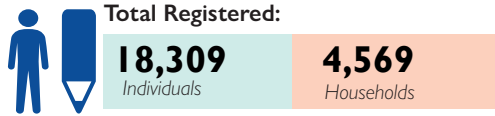


### Overview:



The International Organization for Migration's (IOM) Displacement Tracking Matrix (DTM) team conducted a biometric registration (BMR) exercise at the Cathedral Collective Centre in Wau town, Western Bahr el Ghazal. In cooperation with the responsible camp management agency, Action for Development (AFOD), and with support from the World Food Programme (WFP) and other partners, the exercise took place between 29 September and 5 October 2018.

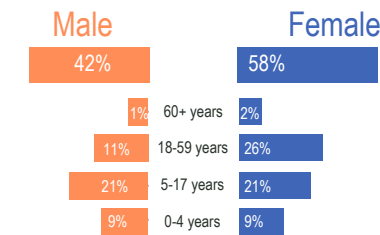
The team registered 18,309 individuals (4,569 households) living in the Wau Cathedral Collective Centre. Some 86 per cent of households were female-headed.\*

IOM DTM undertakes biometric registration in locations across South Sudan, currently maintaining a database of over 700,000 individuals. This exercise in Wau will help the humanitarian community better allocate resources and reach the displaced community in the collective centre more effectively.

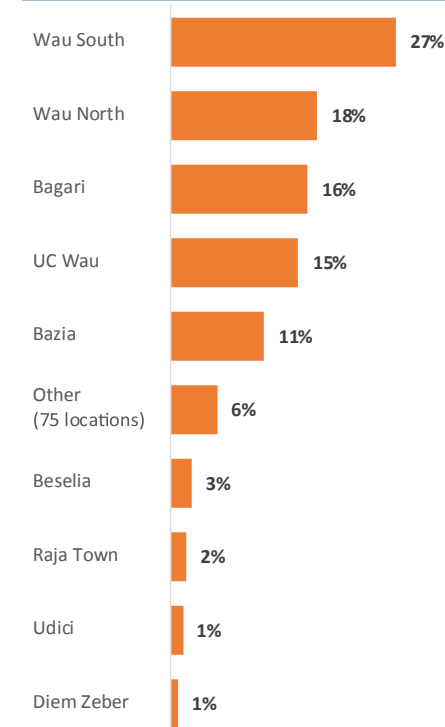
### Sex ratio



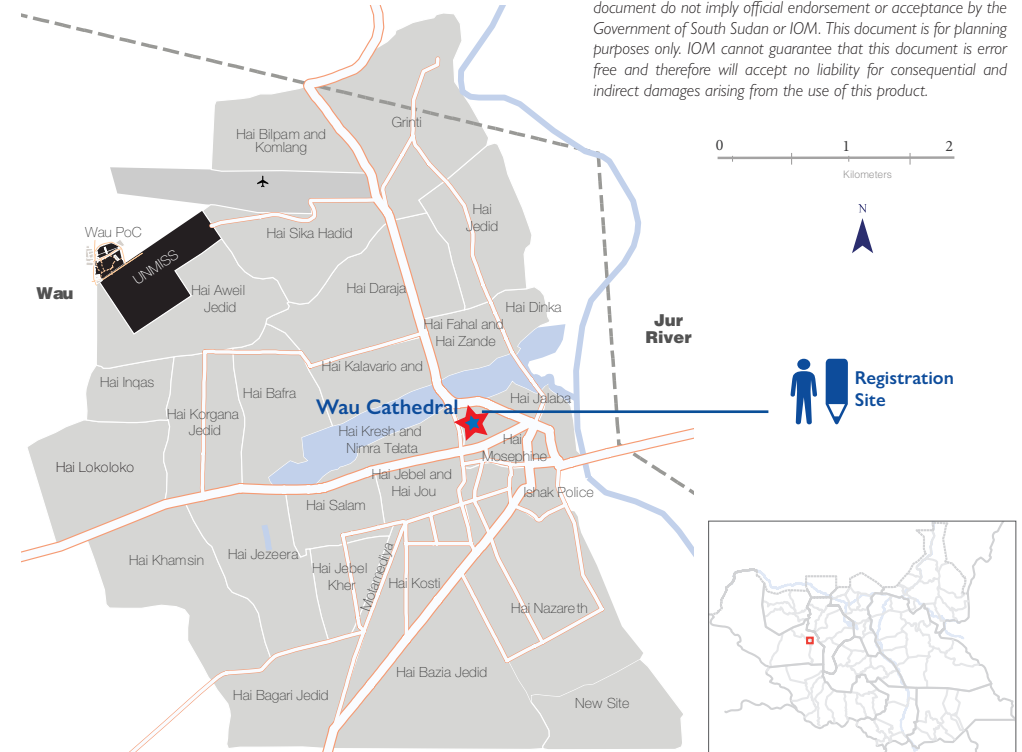
### Population pyramid (18,309 individuals)



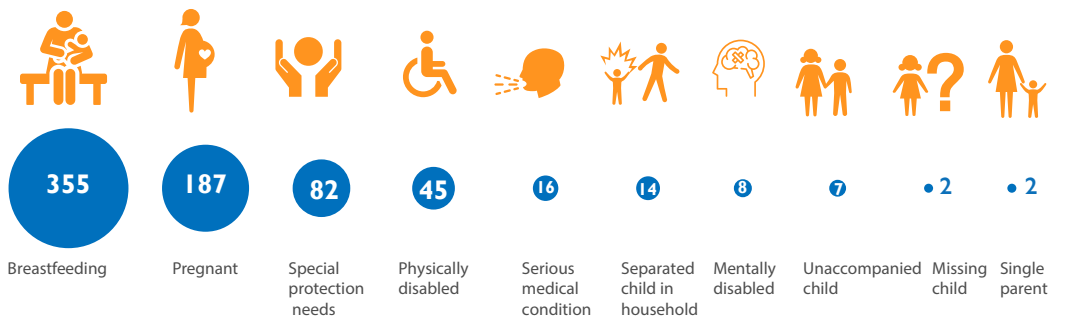
### Habitual residence prior to displacement



### Location map: Wau Cathedral, South Sudan



### Number of households reporting special needs or vulnerabilities



\*During registration, men often decide to register by themselves whereas women register with their children.